

THIS WAS FOR 4TH/5TH GRADERS. THEY MADE AN AMAZING BULLETIN BOARD WITH ALLOF THE WORK.



A R E A S C A T T  
 C S R T H I C B H X S I S I  
 K H O R U S W J T O M B Z S  
 S Y G A J P A P Y R U S P K  
 E F L D X G D A S O W E I R  
 S I Y K V I P H A R O A H W  
 M K P L M H N E X N I H P S  
 A U H A T U D U N Z B N V U  
 R T R J G W M M S J I O L T  
 X Y V S Z A P M Q R S P Y O  
 P T U T G N I K Y X Y R S L

EGYPT	TOMB	ASP
MUMMY	IBIS	PHARAOH
PYRAMID	RA	HORUS
CURSE	NILE	PAPYRUS
OBELISK	LOTUS	IBIS
KING TUT	SPHINX	LAPIS
CLEOPATRA	RAMESES	GOLD
PALM TREE	SCARAB	H ROGLYPH
CAMEL		
SUN		

This Award certifies that

Is an Honorary  
Junior

# Egyptologist

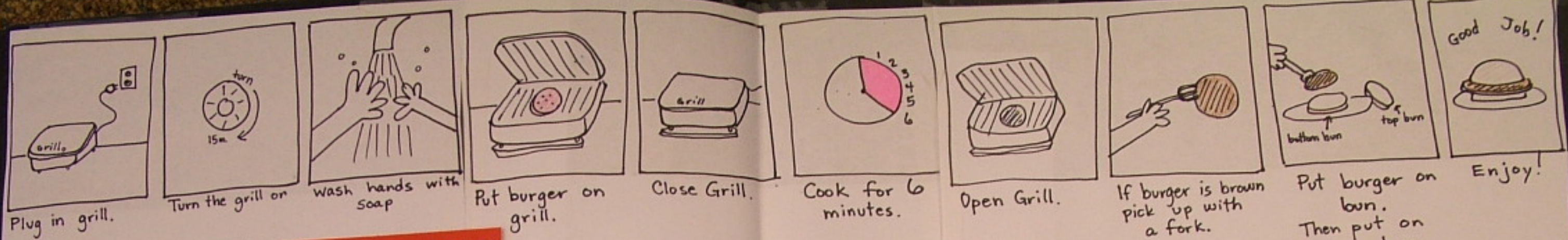
*Handwritten signature*  
Mr. B.



HAVE  
YOU SEEN  
PECKY?

PORTFOLIO

BRET  
BIGHAM



Plug in grill.

Turn the grill on  
15m

Wash hands with  
soap

Put burger on  
grill.

Close Grill.

Cook for 6  
minutes.

Open Grill.

If burger is brown  
pick up with  
a fork.

Put burger on  
bun.  
Then put on  
top bun.

Enjoy!

MOST OF MY CARTOONING IS NOT SO EXCITING. LAST WEEK WE HAD THIS GREAT STUDENT W/ AUTISM COME IN TO COOK. I HAD 5 MINUTES TO DRAW HIM A VISUAL PROMPT. (HE MADE A PERFECT BURGER)

MY CLASS MAKES UP PACKETS OF SOME OF THESE CARTOONS TO GIVE OUT TO SCHOOLS.

IT MAKES A JOB AND HELPS OUT ANOTHER CLASS.



### Fish Mania!

K	R	E	P	P	A	N	S	P	M	T	C	W	A
O	M	A	N	T	A	R	A	Y	U	V	O	M	E
C	G	O	L	D	F	I	S	H	Q	J	D	L	K
T	L	X	A	Y	W	A	H	O	O	A	P	I	
O	J	A	Z	D	Q	K	W	S	H	R	I	M	P
P	H	G	M	W	D	E	S	R	O	H	A	E	S
U	F	Y	E	A	B	U	H	C	X	L	V	R	O
S	T	U	O	R	T	K	S	S	A	B			
E	A	R	A	C	U	D	A	N	U	T			
L	R	Z	C	M	E	E	L	L	S	P			
T	P	Q	B	B	O	K	M	B	P	M			
R	O	W	H	A	L	E	O	Y	S	T	E	R	A
U	N	A	Z	R	N	L	N	I	L	R	A	M	H
T	P	E	R	C	H	P	R	E	F	F	U	P	S

**STUDENT A**  
← WORKS FAST AT A 5TH GRADE LEVEL

**STUDENT B** →  
IS A SLOW WORKER AT A 3RD GRADE LEVEL

- Eel
- Clam
- Oyster
- Seahorse
- Shark
- Tuna
- Bahian
- Octopus
- Perch
- Pike
- Snapper
- Crab
- Loyster
- Shrimp
- Manta Ray
- Goldfish
- Guppy
- Puffer
- Coral
- Sole
- Trout
- Smelt
- Kelp
- Bass
- Cod
- Crowdad
- Whale
- Tarpon
- Marlin
- Wahoo
- Turtle
- Chub

### Fish Mania!

b	e	s	e	a	h	o	r	s	e
x	e	h	o	y	s	t	n	i	n
e	l	a	r	s	s	a	b	v	p
l	t	r	o	u	t	c	a	f	i
b	u	k	e	l	p	m	r	i	k
b	n	a	z	d	q	b	c	s	e
u	a	w	o	p	m	i	r	h	s
b	v	c	o	r	a	l	d	a	c

fish  
crab  
eel  
cod  
bass  
kelp  
coral

seahorse  
bubble  
shark  
shrimp  
pike  
trout  
oyster  
tuna

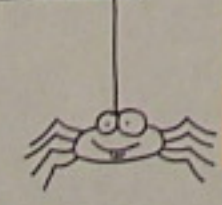
FOSTER KIDS HAVE A LOT OF ISSUES ABOUT MISSING FAMILY. FISH-O-GRAMS, TURKEYGRAMS, ETC. WERE MY IDEA TO TEACH ONE OF MY STUDENTS HOW TO WRITE LETTERS SO SHE COULD KEEP IN TOUCH WITH HER GRANDPARENTS.

THESE TWO PAGES ARE A GOOD EXAMPLE OF HOW I ADAPT WORK FOR STUDENTS. EACH STUDENT GETS A "FISH MANIA" BOOK. THEY WORK AT THE SAME PACE AND FINISH AT THE SAME TIME. NO STIGMA FOR ANYONE... JUST SUCCESS FOR EVERYONE.

MY CURRENT CLASS MAKES CATNIP AND DOGGY BAGS. THEY LABEL, SCOOP, SEAL + SELL THEM. THIS ALLOWS ME TO PAY THEM (SCHOOL DOLLARS) AND TEACH THEM THE VALUE OF WORK.



What is it that scares you most?  
 A house that's haunted by a \_\_\_\_\_  
 In one window a mean black \_\_\_\_\_  
 And on the step a great big \_\_\_\_\_  
 Be careful now Halloween's a coming.  
 When those \_\_\_\_\_ start flying,  
 You'd better start running!!



Kids in Special Ed, Foster care, group homes, don't get invited to a lot of parties. So... I make sure every holiday or season or birthday is celebrated properly.



Gobble, gobble, gobble!!  
 (Happy Turkey Day!!)

